

Fear of Appreciation

Eduardo Levy-Yeyati
Federico Sturzenegger

The World Bank
Latin America and the Caribbean Region
Office of the Chief Economist
November 2007



Abstract

In recent years the term "fear of floating" has been used to describe exchange rate regimes that, while officially flexible, in practice intervene heavily to avoid sudden or large depreciations. However, the data reveals that in most cases (and increasingly so in the 2000s) intervention has been aimed at limiting appreciations rather than depreciations, often motivated by the neo-mercantilist view of a depreciated real exchange rate as protection for domestic industries. As a first step to address the broader

question of whether this view delivers on its promise, the authors examine whether this "fear of appreciation" has a positive impact on growth performance in developing economies. The authors show that depreciated exchange rates appear to induce higher growth, but that the effect, rather than through import substitution or export booms as argued by the mercantilist view, works largely through the deepening of domestic savings and capital accumulation.

This paper is a product of the Office of the Chief Economist of Latin America and the Caribbean Region Policy Research Working Papers are also posted on the Web at <http://econ.worldbank.org>. The author may be contacted at ely@utdt.edu.

The Policy Research Working Paper Series disseminates the findings of work in progress to encourage the exchange of ideas about development issues. An objective of the series is to get the findings out quickly, even if the presentations are less than fully polished. The papers carry the names of the authors and should be cited accordingly. The findings, interpretations, and conclusions expressed in this paper are entirely those of the authors. They do not necessarily represent the views of the International Bank for Reconstruction and Development/World Bank and its affiliated organizations, or those of the Executive Directors of the World Bank or the governments they represent.

Fear of Appreciation ¹

Eduardo Levy-Yeyati

The World Bank and Universidad Torcuato Di Tella

Federico Sturzenegger

Kennedy School of Government, Harvard University and Universidad Torcuato Di Tella

¹ We thank César Calderón, Luis Cubeddu, Javier Finkman, Jeff Frankel, Ricardo Hausmann, Robert Lawrence, Ricardo Lopez Murphy, Guillermo Perry, Dani Rodrik, Luis Servén, and seminar participants at the Harvard Kennedy School, the IDB, the IMF, the Central Bank of Turkey and the Central Bank of Argentina for helpful comments. We thank Luis Casanova, Pablo Gluzmann, Victoria Cocoz and Ramiro Blázquez for excellent research assistance. The usual disclaimers apply.

I. Introduction

In 2005, 4 middle-income developing countries (Indonesia, Romania, Slovak Republic and Turkey) joined the group of 21 economies that officially run inflation targeting regimes in the context of freely floating exchange rates.² While this trend has been heralded as the triumph of floating regimes, many countries (China, Malaysia, Thailand or Argentina, to name a few) are still actively pursuing active exchange rate policies. In fact, the trend seems to point this other way, with floating regimes accounting in 2004 for only 19% of all countries down from 26% in 2000 (according to the IMF's regime classification). Additionally, international reserves in most developing countries are growing when even at a historical high, and two emerging economies (Argentina in 2005, Thailand in 2006) introduced controls on capital inflows to countervail the appreciation of their currencies. Are we re-enacting the fear of floating of the 90s, or is this a new breed of active exchange rate policy? If so, are its premises validated in the data?

To address these questions, we pursue two objectives. First, we examine the evolution of exchange rate regimes over the recent period, to identify old and new trends and, more generally, to characterize the evolution of exchange rate policy in the 2000s. It documents the prevalence of a *fear of appreciation*—namely, the tendency to intervene to depreciate (or to postpone the appreciation of) the local currency—, a fear of floating in reverse that contradicts the growing consensus built around a float cum inflation targeting (FIT) paradigm predicated on the absence of an active exchange rate policy. Second, we evaluate the implications of fear of appreciation in terms of economic performance—and, in particular, whether the neo-mercantilist rhetoric underscoring this policy delivers on its promises in terms of export growth and import substitution— for developing economies where the premise of temporary protection to domestic industries applies more naturally. We find that fear of appreciation does contribute to growth, but the channel, rather than a boost to the tradable sector, appears to lie on the effect of currency undervaluation on savings and capital accumulation.

In perspective, the exchange rate debate in developing economies in recent years revolved around the interplay of two contrasting features of financial development. First, the fact that financial

² This does not include the economies of the euro zone, which target inflation jointly but are typically excluded from the float group.

globalization led to a growing ineffectiveness of monetary policy. More precisely, capital controls were found to be decreasingly effective as economies became more sophisticated, thus strengthening the restrictions imposed by the *impossible trinity* –previously circumvented due to the absence of de facto financial integration (Rose, 2006)– all of which made floating regimes more attractive. Second, the role of (domestic and external) financial dollarization, namely, the foreign currency denomination of residents’ assets and liabilities that, to the extent that it introduced currency exposures that raised the risk associated with exchange rate jumps, made pegged regimes look more attractive.³ Indeed, it was the risk of balance sheet losses to financially dollarized governments and firms in the event of a devaluation –stressed in the third generation models of currency crises popularized in the context of the Asian crisis– that led to the definition of *fear of floating* (Calvo and Reinhart, 2002), namely, recurrent de facto exchange rate intervention in officially floating regimes.

The first aspect of the debate led naturally to the bipolar view (the inherent ineffectiveness and instability of conventional exchange rate bands and pegs in the presence of de facto capital mobility) that argued that financially integrated economies could either float or hard peg.⁴ Combined with the fear of floating view, this approach derived naturally into a “unipolar view” according to which hard pegs were the only sensible option for financially dollarized economies: if devaluations were contractionary due to balance sheet effects, exchange rate flexibility would only amplify the cycle, rather than smooth it out as predicated by the standard theory.⁵

However, while theory was going one way, policy seemed to head in the opposite direction. By the end of the decade, the success in building central bank autonomy and monetary credibility, together with the resulting decline in inflation and exchange rate pass-through, led to the growing popularity of the flexible pole of the bipolar view as the background for different varieties of inflation targeting arrangements that prioritized the inflation rate, rather than the exchange rate, as the key nominal anchor. Not surprisingly, among emerging countries, this trend started in economies with relatively low levels of financial dollarization (Chile, New Zealand, South Africa, Brazil), gradually extending to other countries *pari passu* with a reduction in their degree of dollarization. In addition, the disappointing Argentine experience with a currency board cast doubt on the premises (monetary and

³ See Levy Yeyati (2006).

⁴ See Eichengreen (1994) and Fischer (2002).

⁵ See Frankel (2005) on balance sheet effects and contractionary devaluations, and Calvo (2000) on the unipolar view.

fiscal discipline) on which the case for hard pegs had been predicated.⁶ Ultimately, the debate in the new millennium appears to have converged to an inverted unipolar view, whereby flexible regimes are seen as the only sensible (and durable) choice as economies grow financially integrated and sophisticated.⁷

To evaluate whether this shift towards the flexible pole is actually taking place, in this paper we update and extend Levy Yeyati and Sturzenegger's (2005) dataset (LYS) on de facto exchange rate regimes. Based on this evidence, we find that the convergence to the FIT paradigm is not taking place across the board: the share of non-floats (intermediates, conventional and hard pegs) represents 75% of the sample, exactly the same share as in 2000.

Does that mean that fear of floating has continued to be prevalent despite the favorable context and the reduced currency exposure? To get a full answer to that question, it is crucial to note a semantic nuance that has been surprisingly understated in the recent exchange rate regime literature: fear of floating, as originally defined by Calvo and Reinhart (2002), entails a clearly asymmetric exchange rate policy. Since only depreciations trigger fears of financial distress or inflation pass-through, under fear of floating the intervention response should be stronger for (if not limited to) upward exchange rate movements. More generally, the incentives and implications to intervene in order to avoid an appreciation are radically different from those related to avoiding a depreciation: where the latter focus on short-run financial crises, the former is usually predicated on long-term economic growth. Similarly, the context conducive to one or the other differs: whereas fear of floating would tend to arise in times of financial turmoil, fear of appreciation will likely be triggered by economic bonanzas. At any rate, treating interventions in a symmetric way –in particular, attributing any intervention to fear of floating as has been previously the case in the literature– may lead to overstate the incidence of financial factors –more so in recent years when fear of appreciation appears to have prevailed.

The mercantilist view that exchange rate policy –more precisely, a temporarily undervalued currency– could be used to protect infant industries as a development strategy has a long tradition in economic theory and have recently enjoyed a minor revival. The issue of undervalued exchange rates has received considerable attention as a result of China's reluctance to float its exchange rate, a strategy

⁶ See De la Torre et al. (2002) for a discussion of the Argentine debacle and its implications for the exchange rate debate.

⁷ See Levy Yeyati (2005) and references therein. Rose (2006) makes an eloquent case for the new FIT paradigm.

presumed to be aimed at preserving the competitiveness of China's exports.⁸ In academic circles, the role of depreciated real exchange rates for stimulating growth has been discussed in Rodrik (2007), it has also been found important in growth accelerations (Hausmann et al., 2005 and Johnson, Ostry and Subramanian, 2006), and has been regarded as an efficient development tool (Rodrik, 2006). More recently, the effects of overvaluation have been invoked to explain the "dutch disease" effect of foreign aid (Rajan and Subramanian, 2006) or the disappointing growth dividends of financial integration (see Prasad, Rajan and Subramanian, 2006). Despite this indicative evidence, neo-mercantilist views have been saluted, at best, with skepticism.

To assess the economic impact of fear of appreciation, we proceed in two steps. First, we refine the de facto regime classification to identify two types of foreign exchange interventions: one aimed at defending the domestic currency (as in the traditional fear of floating), and one aimed at depressing it (as in fear of appreciation). In turn, with this finer classification at hand, we assess the economic implications of fear of appreciation. Specifically, we evaluate whether foreign exchange interventions geared towards containing a process of appreciation actually help sustain a depreciated real exchange rate and, once this fact is established, we study the effect of interventions on growth. We find that fear of appreciation lead to faster output and productivity growth, which is not restricted to short-term cyclical output changes: we report a significant positive effect on the long-run component of GDP growth. However, as opposed to what it is usually argued, we find that the effect seems to come not from export-led expansions or import substitution, but rather from increased domestic savings and investment rates.

The paper is organized as follows. Section II introduces our extended exchange rate regime classification and reports some stylized facts on exchange rate policy in recent years. Section III characterizes fear of appreciation and documents its relative importance over time. Section IV explores the economic implications of fear of appreciation, identifying links with the real exchange rate and economic growth, and examining alternative channels that could account for the growth effect. Section V reviews alternative theoretical explanations for our findings, and concludes.

⁸ See Aizenmann and Lee (2007).

II. De facto regime classification: Updating

In Levy-Yeyati and Sturzenegger (2001) we introduced a de facto classification of exchange rates that relied on clustering country-year observations on the basis of three classifying variables: the movements of the nominal exchange rate within each year, the movements in central bank reserves (intended to capture interventions in exchange rate markets) and changes in the rate of change of the exchange rate (to capture crawling-peg regimes).⁹ The use of reserves changes distinguished our classification from later attempts at classifying exchange rate regimes that relied solely on exchange rate volatility,¹⁰ and was critical to characterize exchange rate *policy* –as opposed to exchange rate volatility. It was this measure of foreign exchange intervention that allowed us to tell whether a stable exchange rate was the result of an active policy aimed at limiting exchange rate volatility (as is often assumed), or just the reflection of a stable environment in the context of a flexible exchange rate that does not impose any constraint on macroeconomic policy. In turn, the direction of the intervention will be the key variable to identify fear of floating from fear of appreciation in the finer regime classification that we propose here.

Central Bank interventions are notoriously difficult to measure and they usually differ from a simple measure of reserve variation. To approximate as closely as possible the intervention impact of changes in reserves, we subtract government deposits at the central bank from the Central Bank’s net foreign assets.¹¹ More specifically, we define net reserves in dollars as:

$$(1) \quad R_t = \frac{\text{Foreign Assets}_t - \text{Foreign Liabilities}_t - \text{Gov. Deposits}_t}{e_t}$$

⁹ The methodology classifies the country year data by the k-means algorithm, through a two step procedure with five groupings. See Levy Yeyati and Sturzenegger (2004a, 2004b, 2005) for further reference.

¹⁰ See, among others, Reinhart and Rogoff (2003) and Shambaugh (2004).

¹¹ Oil producing countries and countries with important privatization programs are examples of cases where the latter correction matters. Calvo and Reinhart (2000) indicate other reasons (hidden foreign exchange transactions, use of credit lines, derivative transactions, or issuance of debt in foreign currency) that make it difficult to compute the real movement in reserves. To these one could add coordinated intervention by other central banks (though this should be limited to G-3 economies) and the measurement error introduced by the fact that all accounts are transformed to dollar units. If the Central Bank holds a portfolio of assets with several currencies, changes in the parities between the reserve currencies can be mistaken for foreign exchange interventions. We believe this measurement error problem should not be significant as most of the reserves are held in dollar-denominated assets.

where e indicates the price of a dollar in terms of local currency.¹² In turn, our measure of intervention for country s and year j is defined as the annual average of the absolute value of monthly interventions (months are indexed by t), that is, the average absolute change in net international reserves relative to the monetary base in the previous month, both measured in US dollar:

$$(2) \quad MR_{s,j} = \sum_{t=1}^{12} \frac{1}{12} \left(\frac{|R_{s,j,t} - R_{s,j,t-1}|}{\frac{\text{Money Base}_{s,j,t-1}}{e_{s,j,t-1}}} \right),$$

where the monthly absolute change in reserves is normalized by the monetary aggregate (both measured in the same currency) to capture the monetary impact of the intervention.

Using this measure of intervention, together with data on the volatility of exchange rates, we updated the LYS dataset to cover the period 1974-2004 and, based on new information, completed the classification for a number of undisclosed basket pegs. As a result, the new dataset includes 179 countries and 4189 observations, covering 82% of all country-year observations for the period.¹³

We can use the measure in (1) to benchmark actual interventions by type of regime against a “typical” intervention under a float, which can be proxied by the distribution of the intervention variable R for the Australia, Japan and the US, three countries that are often considered the closest to textbook floating regimes (**Figure 1**).¹⁴ As can be seen, while pegs generally exhibit heavier intervention than floats, there are still many pegs with limited intervention –relative to the benchmark floats—a fact that can reflect the success of pegs in preempting market pressure, or the fact that many countries choose to peg only when they do not anticipate that the peg will be subject to considerable shocks.

Figure 2 shows the distribution of exchange rates over the recent years. The graph shows that regime choices remained remarkably stable, particularly since 1990. This evidence looks unkind to the bipolar view that forecast the disappearance of intermediate regimes, although it shows a very slight increasing

¹² All variables correspond to the end of period for a specific month.

¹³ To our knowledge, the updated LYS regime classification offers the largest country and year coverage over the post-Bretton Woods period. The data is available online at the authors’ web pages.

¹⁴ The distributions are based on pooled observations of the variable R averaged over the year.

trend in floating regimes. Furthermore, as noted in the introduction, de facto floats continue to represent less than one fourth of the total sample.¹⁵

III. Fear of appreciation

As noted in the introduction, the nature of de facto intermediate and pegged regimes involves a clear asymmetry. While the prototypic fear of floater would exhibit a low tolerance to exchange rate depreciations, there is little in the story to motivate the defense of a depreciated real exchange rate through (often unsterilized) reserve accumulation. Grouping both types of interventions together when studying the implications of the regime choice is likely to misrepresent either of them.

Because the LYS classification is already built on actual interventions, we can identify these two types of intervention with only minor additional work. The simplest way to do so is to sort out countries according to whether they intervene to depress or to defend the exchange rate, i.e. whether the intervention in (2) is positive or negative. We capture this dichotomy in a new measure of intervention $Int1$ defined as the annual average of the monthly interventions:

$$(3) \quad Int1_{s,j} = \sum_{t=1}^{12} \frac{1}{12} \left(\frac{R_{s,j,t} - R_{s,j,t-1}}{\left(\frac{MBase_{s,j,t-1}}{e_{s,j,t-1}} \right)} \right),$$

which now will be negative or positive according to whether the central bank is selling or purchasing the foreign currency.

Figure 3 distinguishes among intermediate regimes by indicating the percentage of cases where intervention is positive. As the figure shows, the direction of intervention has changed dramatically (and predictably) over time. The debt crises years found most developing countries selling foreign

¹⁵ This broad distribution masks important differences across groups of countries. For example, Latin American countries seem to have embraced floating arrangements full-heartedly (mostly in combination with inflation targeting regimes), with the amount of floats doubling between 2000 and 2004 at the expense of both intermediate and pegged regimes. On the other hand, emerging Asia has preserved its bias toward more rigid arrangements. Interestingly, this evidence is *a priori* at odds with the bipolar view, since currency mismatches in Latin America are large, and certainly larger than in Asia.

currency to defend their exchange rate anchors, while in recent years (with the unsurprising exception of crisis year 1998) countries have increasingly intervened in the opposite direction. As it turns out, conventional fear of floating represents today less than 20% of intermediate regimes. The same story emerges when interventions are detrended (to factor out the positive intervention that may be associated with the long-run growth of output and monetary aggregates), and when very small reserves changes are filtered out (with the cutoff defined as the 95% confidence interval of the distribution of interventions in benchmark floats Australia, Japan and the US). Results are comparable when the exercise is replicated for the joint sample of intermediate and pegged regimes.

IV. Economic implications

Having shown that fear of appreciation has been the prevailing pattern in recent years among countries with an active exchange rate policy, the next step is to understand the motives behind this choice, and to evaluate whether these motives are empirically validated. In particular, it is worth exploring whether these interventions have a significant and lasting effect on real variables despite the traditional view that nominal interventions are unlikely to have a real economic impact.

Economic performance tends to be positively correlated with a number of variables (such as capital inflows or terms of trade shocks) that tend in turn to lead to real appreciations and the accumulation of reserves. This aspect is particularly relevant for our intervention measure because increases in output tend to induce increases in money demand, which in turn may be met by either increases in domestic credit or in international reserves.¹⁶ Moreover, the stock of reserves may grow with monetary aggregates if reserves are held for precautionary motives.¹⁷ In either case, to the extent that our simple intervention measure may capture this growth-induced increase in reserves as intervention, it may be biased by endogeneity problems.

¹⁶ Alternatively, reserves can increase with broad money due to precautionary motives.

¹⁷ See Aizenmann and Lee (2005) and Levy Yeyati (2005) for evidence on the precautionary motives for reserve accumulation in developing economies.

To address this potential concern, we adopt a conservative strategy: we modify our intervention measure to filter out the effect of changes in money demand. Specifically, we define first the ratio of reserves to broad money ($M2$):¹⁸

$$(4) \quad R2_{s,j,t} = \frac{\text{Foreign Assets}_{s,j,t}}{M_{s,j,t}},$$

and then we compute a new intervention measure, $Int2$, as the annual average change of this ratio:

$$(5) \quad Int2_{s,j} = \sum_{t=1}^{12} \frac{1}{12} (R2_{s,j,t} - R2_{s,j,t-1}).$$

Notice that a positive $Int2$ implies a strong degree of intervention, because for intervention to be positive reserve accumulation must exceed the increase in monetary aggregates. Thus, positive values of this “strong intervention” measure cannot be interpreted as a response to an increase in money demand. For robustness, in the empirical tests that follow we use both intervention measures.

a. The real exchange rate

The first critical link to be explored empirically is the one between intervention and real appreciations, that is, whether interventions indeed manage to preserve a depreciated real exchange rate. We do this in **Table 1**, where we run a panel regression of the log changes of the real exchange rate on key determinants of the exchange rate: terms of trade, the output of trading partners, and capital inflows.¹⁹ All regressions include year dummies to control for global factors such as international liquidity or risk appetite, as well as country fixed effects. Finally, we include estimates for 2- and 3-year non-overlapping intervals to test for cumulative effects. Our sample, here as well as in the following tests, comprises all developing economies.

Our benchmark specification is given by:

¹⁸ Alternative estimations using the ratio to base money provide the same results and are available upon request.

¹⁹ We choose the bilateral over the multilateral exchange rate for these tests because it is the one typically targeted by intervention. However, comparable results are obtained using the IMF’s real effective exchange rates are comparable.

$$(6) y_{i,t+s} - y_{i,t} = \beta (1/s) \sum_{j=t,t+s} Int_{i,j} + \gamma' \mathbf{X}_{i,t\dots t+s} + \mu_{t+s} + \theta_i + \varepsilon_{i,t+s},$$

where y is the log of the real exchange rate, \mathbf{X} is a vector of controls including the log difference of the terms of trade, the log difference of the trade-weighted average of the GDP of the country's trading partners, and the ratio of the financial account over GDP (to measure capital inflows), and μ , θ , ε are, respectively, the year and country dummies and the error term.

Exchange rates and reserves tend to change dramatically and endogenously over periods of financial distress that may lead to strong positive correlations (for example, a reserve drain followed by a currency collapse) that could be misleadingly construed as a policy choice. To make sure that these extreme events do not contaminate our results, in all regressions we exclude extreme values of the intervention measure and the dependent variable.²⁰

Table 1 shows our results. We find the expected positive effect of intervention on the real exchange rate: the contemporaneous effect is positive and significant. The results indicate that a 10% increase in the reserves-to-broad money ratio leads to a contemporaneous 1.69% increase in the real exchange rate and that the effect almost doubles if intervention is sustained over two years. The estimated effect is smaller (but still significant) for *Int1*. The effect appears to decline (and ceases to be significant) beyond the second year.

It is important to note at this point that reverse causality should not be a concern here: since positive interventions are likely to be triggered by real appreciations, endogeneity, if anything, would offset the positive correlation found in the table. Similarly, to the extent that mercantilist interventions occur when potentially unobservable “good things happen”, it is unlikely that omitted variables can account for the observed positive coefficient: on the contrary, uncontrolled favorable external factors would tend to weaken the positive association between intervention and the real exchange rate.

To complete the characterization of fear of appreciation, standard economic theory provides another natural testable implication: intervention to prevent a downward exchange rate adjustment should

²⁰Specifically, we include values of *Int1* between -150% and 150%, and values of *Int2* between -100% and 100%. Similarly, we restrict our sample to values of the dependent variable within 2 standard deviations from the mean.

derive, in the absence of price controls, in inflationary pressures, as the system countervails the effects of intervention to move the exchange rate gradually towards its equilibrium level. **Table 2** shows this by estimating a standard log differenced money demand equation (including the lagged dependent variable to control for inertial inflation), where intervention variables are added as additional controls. The data shows that, while intervention is not significantly correlated with inflation, it is associated with price increases when the latter is measured on the change in the implicit GDP deflator, which is fully in line with the expected increase in the price of tradables relative to non-tradables due to foreign exchange intervention. This is confirmed in columns 5 and 6, and again –for tree-years averages– in columns 7 and 8, where we find that the ratio of the GDP deflator over the CPI is positively related to foreign exchange intervention.²¹

In sum, we can preliminary conclude that both measures of intervention (particularly the second one involving an increase in the international reserves backing of monetary aggregates) are associated with a contemporaneous increase in the real exchange rate, which results in an increase in domestic prices due to the higher price of tradables, rather than in higher consumer prices driven by expansionary monetary policies –which, in turn, may reflect the fact that, at least in recent years, these interventions have been largely sterilized. In what follows, we explore the consequences of this association for economic performance, and the channels through which they materialize.

b. Output and productivity growth

Does fear of appreciation have any influence on economic activity? If so, is it related with short-lived and quickly reverted cyclical fluctuations, or does it contribute to long-lasting output expansions? To explore this issues empirically, we face two methodological problems. On the one hand, there is the already noted positive link between the growth of output and monetary aggregates, which we address here introducing a second intervention variable (*Int2*) that traces reserve accumulation in excess of monetary expansions.²² On the other hand, there is the possibility that interventions and growth

²¹ The tradable component of the GDP is typically larger than that of the consumption basket. Note that, if real wages are kept constant, this difference should translate into an increase in the retribution to capital relative to labor, a point to which we come back in the next section.

²² While in principle there seems to be no reason why the ratio of reserves over broad money (*Int2*) should increase during economic booms, an argument can be made that in the presence of mean reversing real exchange rate swings, a currency mismatched country should prevent appreciation for fear of an ulterior depreciation (Levy Yeyati, 2005). See Caballero and Lorenzoni (2006) for an analytical model along these lines.

respond to common factors. Favorable conditions (both domestic and external) are expected to lead both to faster growth and stronger demand for domestic assets, creating appreciation pressures. Moreover, growth itself can stimulate capital inflows that add to the appreciation bias. In both cases, fear of appreciation may lead the monetary authorities to intervene, inducing a positive association between intervention and economic performance that may be incorrectly interpreted as the result of a positive growth effect of intervention.

Our additional controls (terms of trade, external demand shocks, and capital inflows) should help alleviate this potential problem. We also control for initial wealth (proxied by the initial per capital GDP) and population growth. As before, we include country dummies, and year dummies to capture the effect of global factors such as international liquidity or risk appetite. We also control for initial wealth (proxied by the initial per capital GDP) and population growth.

One potential caveat of the present analysis is the possibility that an association between intervention (that is, growing reserves) and growth captures the recovery that typically follows a financial crisis or, conversely, a protracted output contraction after a boom. While extreme events are already excluded from the regression, the results may nonetheless capture the aftermath of the crisis. To make sure that this is not the case, we add the initial output gap (computed as the HP-cyclical component of output) as an additional control.²³

Table 3 reports the results. The intervention effect appears to be consistently significant and economically important. Column (1)-(4) tells us that a 10% intervention is associated with roughly a 0.14% increase in the growth rate in the following year. As expected, for the stronger *Int2*, the associated increase ranges from 0.18% to .29%. The results are remarkably consistent when estimated over three-year averages. Are these results the reflection of a crisis, that is, an economic downturn at a time when reserves are falling? Columns (2) and (4) dispel this concern: it is not negative intervention (a defensive sale of reserves by central banks under attack) that is driving the results. On the contrary, negative interventions have no additional impact on output growth; if anything, they exert (as in the specification of column 4) no significant impact on economic activity.

²³ We also tested an alternative measure of past output drops, namely, the current depth of the recession that measures the vertical distance to the previous local GDP maximum. Results were virtually unchanged and are omitted for brevity.

Similar results are obtained when we substitute labor productivity (measured as real GDP per worker) for real growth in the previous specification. **Table 4** reproduces the specification of Table 3 with the new dependent variable. The findings are more mixed. This is not unexpected: while it is not unlikely that a one year intervention may in itself trigger a growth process, interventions may have a higher chance to elicit productivity gains only over time.

The previous results are subject to (at least) two potential criticisms. The first one is related to the fact that, by working with short one- and three-year windows, our findings may be the reflection of short-lived cyclical effects on GDP. Moreover, if intervention is induced by economic expansions driven by domestic real shocks not captured by the additional controls, the positive intervention-growth link may be in part reflecting a reverse causality not fully eliminated by the lagging of the independent variables. On a more conceptual ground, the mercantilist view is based on the infant-industry premise that temporary protection leads to permanent effects in terms of competitiveness. More generally, the case for active exchange rate policy is certainly stronger if the effects of temporary intervention prove to be persistent.

A straightforward way of testing for this is to examine the effect of intervention on the trend and cycle components of GDP separately. We do that in **Table 5**, where we re-run the baseline specification of **Table 3** for output cycle and trend, respectively, where the latter are constructed, alternatively, using the Hodrick-Prescott (HP) filter and the Baxter-King's (BK) band-pass procedure, and add the first three lags of the intervention variable. The main result, which do not diverge qualitatively across methodologies, show a positive and significant effect on the long-run component (the effect on the cyclical component is significant only for the first intervention variable). The number, again, indicates sizeable economic effects: based on the BK decomposition, a 10% increase in *Int1* and *Int2* leads, respectively, to cumulative 0.15% and 0.6% increases in long-run growth over four years. All things considered, the evidence suggests a robust, persistent and economically important effect of intervention on economic growth.

The previous statement, however, should be taken with a grain of salt. While growth regressions have been standard in the macroeconomic literature due to their ability to exploit large cross-country datasets amenable to statistical testing, they often raise concerns regarding the robustness of the

results, among other reasons because of the combination of potential simultaneity and endogeneity problems and the fact that it is virtually impossible to find credibly exogenous variables to instrument the relevant controls –almost any time-varying macroeconomic variables have been found to be correlated with growth in the prolific growth literature.²⁴

The fact that the link between intervention and growth identified here still holds over three-year periods and for long-run output trends should help dispel part of the natural skepticism associated with growth regressions. This notwithstanding, in order for the argument to be convincing, it needs to provide a clear empirical characterization of the channel through which this link materializes. Hence, the second criticism mentioned above, to which we turn next.

IV. Intervention and growth: The channel

If we accept for a moment the implication of the previous findings, namely, that there is indeed an effect of exchange rate intervention on growth, where does this effect come from? Is it by promoting import substitution and stimulating the production and export of more sophisticated manufactures previously overpriced relative to international competitors, as the mercantilist view predicates? Does it induce a shift in the production structure that moves the economy to high productivity growth tradable sectors? This is certainly the prime suspect in this case, and the one we examine first in this section.

To do so, we start by looking at the export-import effects, both as a share of GDP, and in terms of their real growth rates. Export and import shares are often used in the literature to measure the impact of the exchange rates on trade. However, they suffer from an important drawback in this context because they are bound to reflect changes in the relative price of tradables. In particular, the shares should increase with a real devaluation, thus delivering almost by definition a positive relation between depreciation and their participation in output even if the former has no effect on traded volumes. It is more accurate to look at the growth volume of exports and imports.

We present the two sets of regressions in **Table 6**. The specifications are similar to those in **Table 3**. In addition, the growth of trade volumes is conditioned on GDP growth to filter the influence of

²⁴ See Rodrik (2005).

economic activity on trade.²⁵ The results are rather disappointing: not only is the *volume* of exports virtually unaltered; the contemporaneous effect, as measured over three-year windows, turns out to be significantly negative. On the other hand, imports are positively correlated with intervention, again at odds with the import substitution premise of the mercantilist view.²⁶

Intervention may exert its benign influence on the quality rather than the quantity of exports. Absent a good proxy for export quality, a second best alternative often used to assess export sophistication is its degree of concentration. However, this avenue does not provide positive results either: export diversification (as measured by a Herfindahl index of exports revenues) appears to be unaffected by intervention (columns 15 and 16).

This negative result on the trade front eliminates one of the key channels through which a depreciation may influence output: export-led expansions. If it is not an export boom what triggers an increase in output, how can we explain the finding that interventions stimulate growth?

Table 7 points at one alternative explanation. Here we look at the link between interventions, on the one hand, and savings and investment rates, on the other. The results are now significant and unambiguous. The savings ratio increases about 5 percentage points if the reserves-to-M2 ratio doubles (columns 2); as can be seen, the result is not driven by external or internal bonanzas, which are captured by the additional controls in the regression. In turn, the investment ratio grows by half that amount (column 4), and interventions are still significant even after controlling for the contemporaneous increase in savings (columns 5 and 6).

The savings channel highlighted in the previous results has not gone unnoticed in the literature. As early as 1965, Diaz Alejandro suggested that a devaluation may generate important income distribution effects, shifting resources from workers to firms or agricultural producers. Yet, Diaz Alejandro believed such changes to be contractionary, due to the negative income effect on consumers and the

²⁵ Note that the mercantilist view presumes that intervention affects trade volumes directly and, in turn, trade has a positive influence on growth. If that is not the case, intervention may still affect trade through its effect on growth, but that will not identify the intervention-growth channel that we are after.

²⁶ Thus, any direct impact of intervention on trade ratios would be entirely driven by the relative price change due to the real depreciation of the currency.

associated slump in domestic absorption.²⁷ A “modern” view, in turn, would stress the contractionary effect of balance sheet effects in the presence of financial dollarization. Firms with foreign currency denominated liabilities will find themselves increasingly cash-constrained following a sharp devaluation, triggering a potentially large fall in investment.²⁸

A consistent story for our findings could be built, however, by combining Díaz Alejandro’s story with the presence of financial constraints. To the extent that a real devaluation reduces labor costs, it contributes internal funds to financially constrained firms, thereby fostering savings and investment. Alternatively, in a financially constrained economy, the implicit transfer from low-income, low-saving propensity workers to high income capitalists should boost overall savings, lowering the cost of capital to the same effect.²⁹ Unlike in the original story, in this version the real devaluation should be expansionary because it relaxes the borrowing constraints that bind the firms (in the first case) of the economy (in the second).

Why isn’t this benign effect on financial constraints outweighed by the adverse balance sheet effect? Presumably, the policy decision to keep the currency undervalued is not independent of the financial dollarization: fear of appreciation is likely to arise in countries where balance sheet effects are small or inexistent. At any rate, the hypothesis that fear of appreciation induces a redistribution towards financially constrained firms relies on the premise that interventions –and, in turn, devaluations– entail a transfer of income from labor to capital (or, more precisely, an increase in the profitability of capital at the expense of labor income). We should examine, then, whether this intervention-induced redistributions actually materialize in practice.

We do this in two ways. First, we look directly at the effects of intervention on the ratio of labor over capital income (**Table 8**) –an exercise that, to our knowledge, was last done in this context by Edwards (1989). We first run the specification in **Table 3**, which controls for population growth, and external factors (terms of trade shocks, external demand shocks and capital inflows). Since a lower labor income ratio may signal a higher productivity of capital, we add lagged productivity growth as an

²⁷ In fact, his work led to a long debate on whether devaluations were contractionary or expansionary, long before financial dollarization introduced an additional –and often dominating– ingredient in the equation.

²⁸ This is the channel popularized by the sudden stop literature (Krugman, 1999; Chang and Velasco, 2001) that led to the unipolar view of exchange rate policy.

²⁹ The first channel is more likely to apply to small and medium enterprises with limited access to finance; the second, to large companies that fund their investments in capital markets.

additional control (which comes up with the expected negative sign). The results are encouraging. We find that a 10% intervention leads to a 0.9% cumulative decline in the labor share over two years when intervention is measured by *Int1*, and to a 5% decline when it is measured by *Int2*.

A second way to test the premise of the redistribution story is through the effect of interventions on the labor market, more specifically, its incidence on unemployment (**Table 9**). Either when we include our set of external indicators in columns 1 and 3, or when we control for the effect of current output growth (which has the expected negative coefficient) in columns 2 and 4, interventions exhibit a significantly negative effect on unemployment. The fact that the redistribution from labor to capital indeed happens at a time of declining unemployment further supports the view that the effect of fear appreciation on real variables, at least in the medium run captured by the previous tests, is mainly driven by a decline in real wages.

Note that these results are in line with our findings in Table 2. To the extent that intervention induces inflationary pressures, less than perfect wage indexation should result in lower real wages. However, this is not necessary to explain the redistribution effect reported in Table 8: inasmuch as the higher relative price of tradables is not fully passed through to the CPI (as our results in Table 2 indicate), capital income should increase relative to labor income even if wages are kept constant in terms of the local CPI. Indeed, the higher return from exports due to the undervalued currency may boost employment and real wages at the same time – particularly in the case of commodity producers with a low component of imported capital where the countervailing effect of a high exchange rate on the cost of imports is only minor.³⁰

V. Discussion: Evidence in search of a theory

Our findings provide an interesting vantage point from which we can revisit the link between nominal and real variables and, in particular, the several hypotheses that have been suggested by the literature regarding the role of exchange rates as a development strategy. While our results support the claim that undervalued exchange rates foster growth, they cast doubts on the channel of import substitution cum export stimulus often highlighted by its advocates. Instead, our tests suggest that the mechanism

³⁰ Note that the same applies to countries where capital and infrastructure investment has been made at the previous lower exchange rate, or is currently subsidized (or regulated) by the government.

is associated with an increase in aggregate savings and investment, and a decline in labor income relative to capital compensation.

This preliminary evidence seems to assign a more limited role for the more recent incarnations of export-led strategies such as self discovery (Hausmann and Rodrik, 2005). The presumed benign influence of mercantilist interventions on export growth and diversification appears not to be there, although the consequences in terms of their potential to foster growth by improving the quality of the export mix (Hausmann, Hwang and Rodrik, 2005) remain to be tested. Moreover, our results seem at odds with previous findings on the effects of overvaluation on the tradable sector by Rajan and Subramanian (2006). However, it is conceivable that those results simply reflect the effect of the relative price change on the output of sectors with varying degrees of exportability.³¹ By contrast, the findings, reported in the same paper, that an undervalued currency fosters growth in labor intensive sectors is fully in line with the negative correlations between fear of appreciation and labor compensation documented here.

Our empirical results point at two alternative channels through which devaluations may contribute to growth. The first one is a labor market enhancing effect reminiscent of the channels identified in classical models of economies with unlimited supply of labor (Lewis, 1958, Fei and Ranis, 1961). In those models, the development challenge was to move workers from unproductive subsistence agricultural jobs into high productivity industrial jobs. While a depreciated exchange rate may be a plausible vehicle to entice firms to hire this surplus labor, the quantitative effects that we find are relatively minor (a 10% increase in the reserve-to-M2 ratio leading to a 0.4% change in the unemployment rate).

A second, alternative channel relates to the benign effect of lower labor costs on access to internal funds by financially constrained enterprises, an aspect that has been highlighted as a source of the rapid recovery in the aftermath of recent emerging market crises (Calvo and Talvi, 2006) and, more generally, as a source of growth in developing economies (Aghion et al. 2006).³² This channel should

³¹ The paper looks at the nominal value added by sector, deflated by a GDP implicit price level. As a result, a real devaluation should reflect positively in the valued added of exportable industries that benefit from higher prices, even if produced quantities remain constant or even decline.

³² In Aghion et al (2006), rather than a source of finance, internal funds are a vehicle that domestic financial markets use to collateralize a joint projects with foreign direct investors carrying state-of-the-art technology.

be particularly relevant for low and middle income economies where financial constraints are more prevalent. Interestingly, the same authors have also flagged, elsewhere, the deleterious effects of a devaluation on firms with foreign-currency liabilities (Calvo et al., 2005; Aghion et al., 2002). Two factors help reconcile these two seemingly contradictory claims. The first one has already been noted: the degree of financial dollarization or, more precisely, its gradual decline in the developing world.³³ The second factor relates to the fact that fear of appreciation, as measured here, captures voluntary interventions to bring down the exchange rate, rather than the involuntary depreciations that occur in period of financial stress *despite* defensive exchange rate intervention, which underlie the predictions of the traditional fear of floating literature.

A final aspect that divides the earlier and modern version of the redistribution argument deserves to be noted: How does the income transfer from labor to capital that was contractionary in the earlier version (Díaz Alejandro, 1965) becomes expansionary here? The previous discussion offers a possible explanation. Díaz Alejandro's view, embedded in a Keynesian framework, revolved around the question of how the income that was transferred from workers to capitalists was ultimately spent. Because Díaz Alejandro was thinking on an agricultural society (his 1965 piece was inspired by the Argentine economy), he did not see these increased savings translating into sources of domestic finance but rather going abroad in the form of foreign assets; hence, the depressed aggregate demand that explained the drop in output. Our findings suggest that the funds that in the earlier version were spent abroad, may in fact be allocated domestically to productive investment previously postponed due to insufficient financing.

Given the currently benign international context, and the recent changes in debt composition and policy in developing countries, we anticipate that the fear of appreciation analyzed here will be the main contender to the current FIT paradigm among developing economies. In this paper, we contributed to the ongoing debate on exchange rate policy by characterizing this policy and documenting its implications for the real economy. The promising results reported here only confirm that the exchange rate debate is still alive and in need of a reappraisal.

³³ Financial dollarization is possibly the sole aspect that may turn the exchange rate from a countercyclical shock absorber into a procyclical source of economic contractions (see Frankel, 2005; and Levy Yeyati, 2006). Given that the pro-growth consequences of fear of appreciation are more likely to materialize in the absence of the severe currency mismatches usually found in financially dollarized economies, it is not surprising that its popularity has grown in recent years *pari passu* with a gradual dedollarization of financial markets in developing countries in the 2000s.

Figure 1

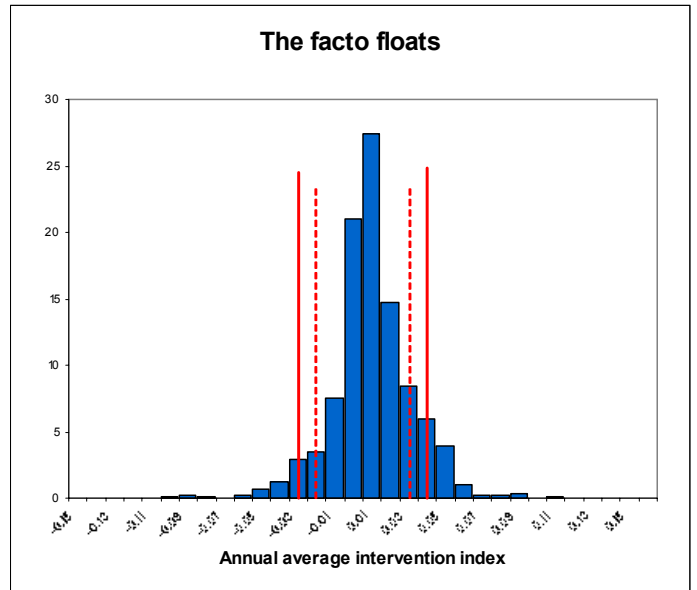
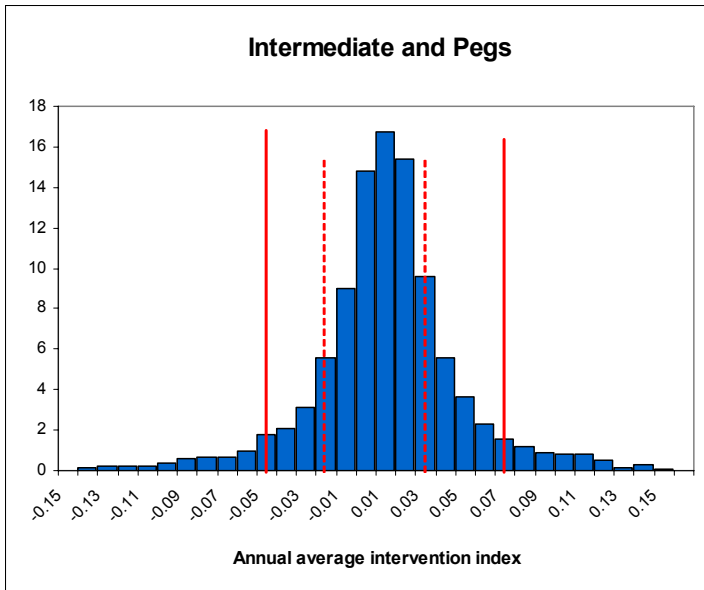
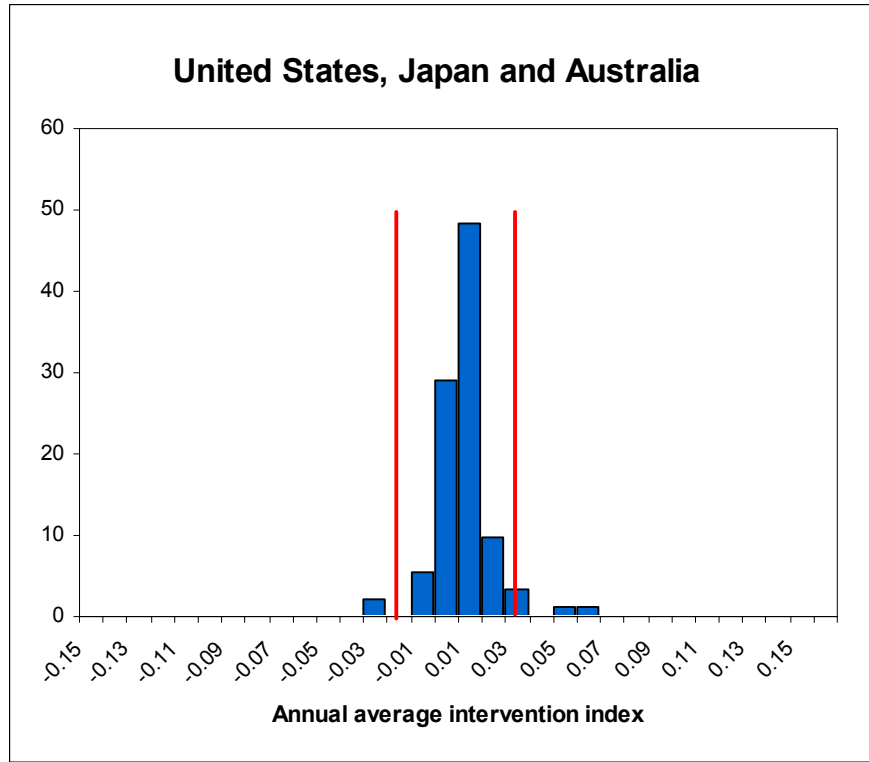


Figure 2

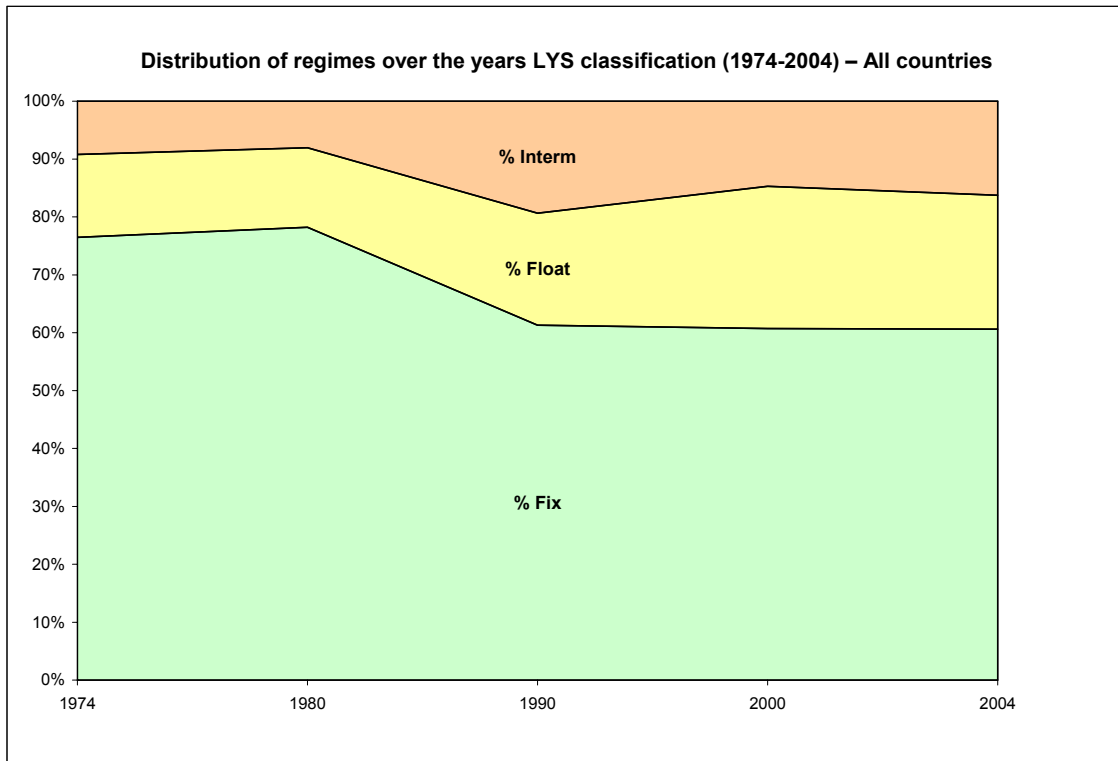


Figure 3

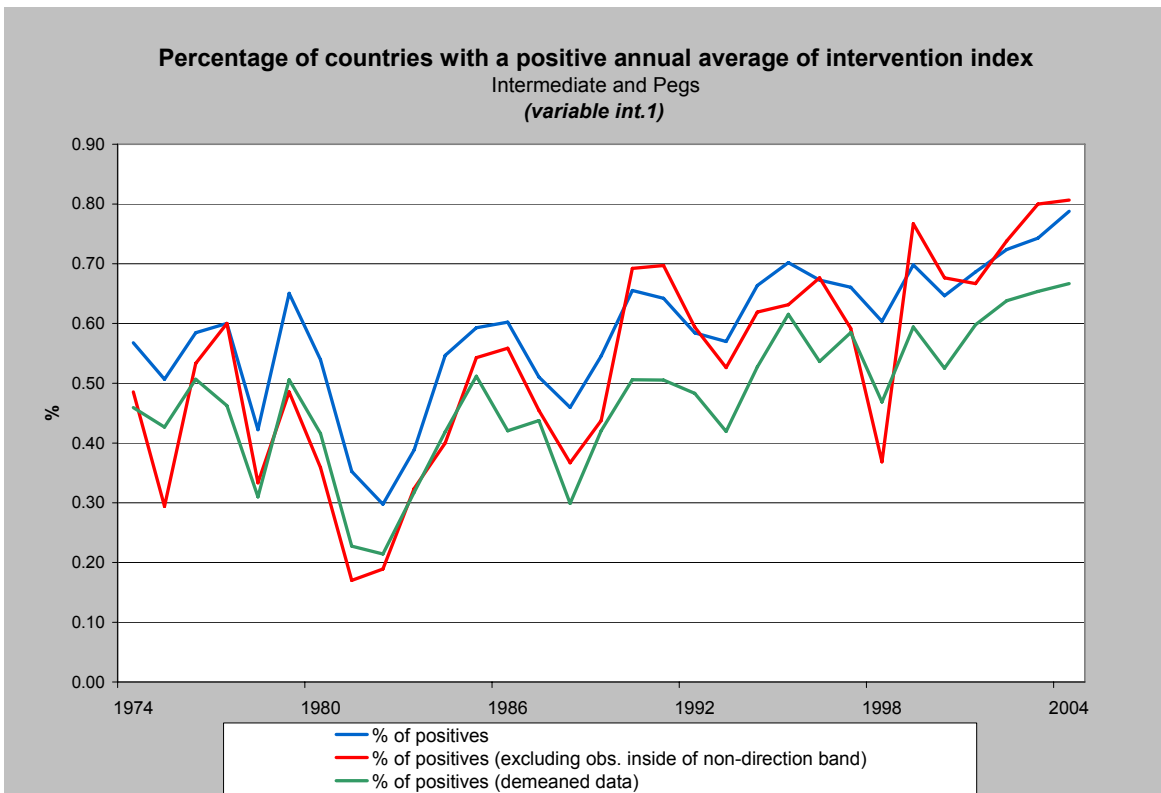
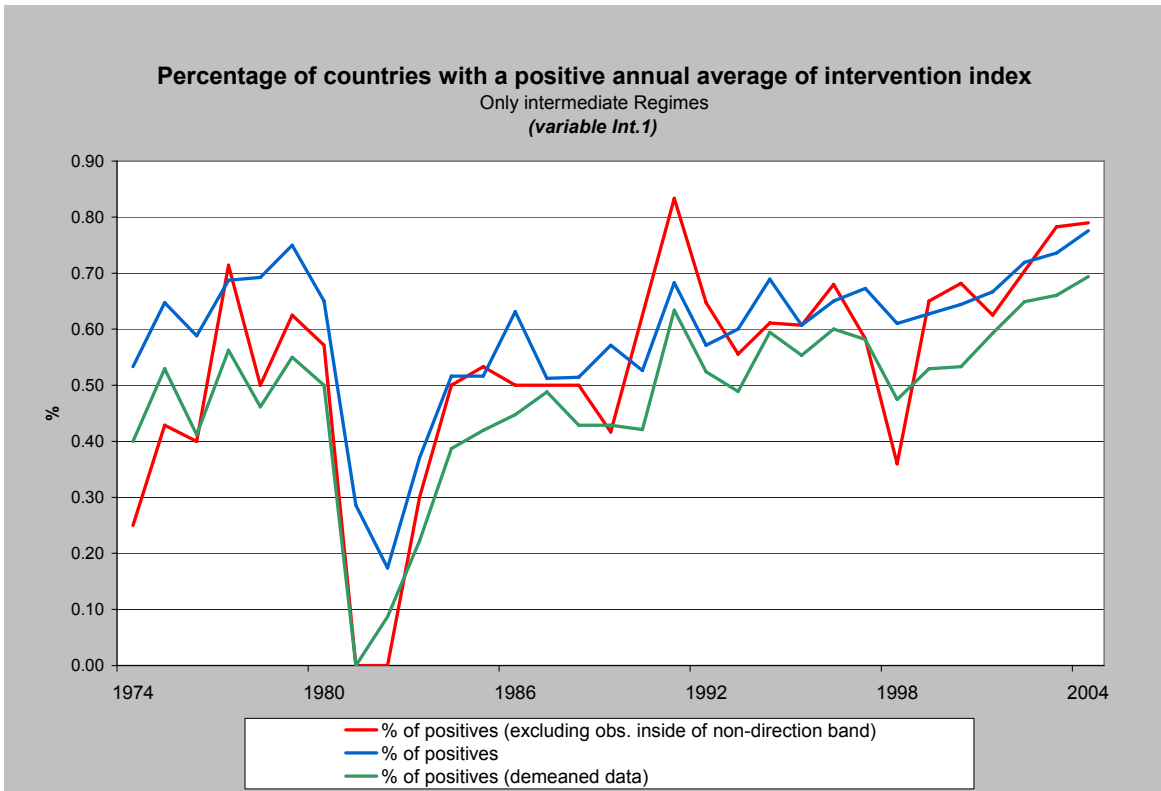


Table 1

Sample of 1974-2004

Dependent Variable: *Logarithm of Real Exchange Rate*

Variables	TCR					
	[1]	[2]	[3]	[4]	[5]	[6]
	(t)	(t)	(2-year average)	(t)	(3-year average)	(t)
int1. Index (t)	0.036* (0.022)		0.109** (0.055)		0.048 (0.072)	
int2. Index (t)		0.169** (0.075)		0.262** (0.120)		0.208 (0.169)
<i>Control Variables</i>						
$\Delta \text{Log}(\text{ToT})$	0.000 (0.001)	0.000	0.000 (0.001)	-0.001 (0.001)	-0.002 (0.002)	-0.002 (0.001)
Trading partners growth	-0.008 (0.005)	-0.007 (0.005)	-0.011 (0.008)	-0.007 (0.008)	-0.013 (0.014)	-0.011 (0.012)
Financial account to GDP	-0.012*** (0.002)	-0.010*** (0.002)	-0.013*** (0.003)	-0.013*** (0.002)	-0.017*** (0.004)	-0.014*** (0.003)
Observations / Countries	1350 / 76	1433 / 80	675 / 76	778 / 80	485 / 76	549 / 80
R-squared	0.989	0.99	0.99	0.991	0.99	0.991
Mean Dep. var.	3.718	3.733	3.733	3.733	3.733	3.733
St Dev Dep. var.	2.414	2.475	2.489	2.489	2.475	2.475

Note: $y(t, t+s)$ corresponds to the average over the period t to $t+s$ of the variable y .

Except otherwise indicated, all controls are averages for the period over which the dependent variable is measured.

All regressions included country fixed effects and Time dummies

Robust standard errors in parentheses / * significant at 10%; ** significant at 5%; *** significant at 1%

Table 2

Sample of 1974-2004

Dependent Variable: Percentage of Change of Consumer Price Index and GDP Deflator

Variables	$\Delta\%CPI$ (t)							
	[1]	[2]	[3]	[4]	[5]	[6]	[7]	[8]
int1. Index (t)	0.325 (0.753)		1.408 (0.891)		1.085** (0.425)		2.248** (1.032)	
int2. Index (t)		1.972 (2.978)		14.267*** (3.599)		3.109** (1.520)		11.071*** (2.647)
<i>Control Variables</i>								
Lagged dep. var.	0.154*** (0.032)	0.138*** (0.028)	0.167*** (0.032)	0.168*** (0.024)	0.024 (0.035)	0.031 (0.034)	-0.031 (0.052)	-0.014 (0.052)
$\Delta\%GDP$	-0.122** (0.058)	-0.129** (0.058)	-0.129** (0.064)	-0.174*** (0.064)	-0.01 (0.035)	-0.013 (0.035)	0.110* (0.065)	0.086 (0.063)
$\Delta\%M2$	0.101*** (0.039)	0.124*** (0.038)	0.183*** (0.056)	0.229*** (0.052)	-0.015 (0.010)	-0.006 (0.011)	0.018* (0.010)	0.017 (0.011)
Interest Rate	3.9024*** (4.99)	3.9947*** (4.82)	4.6855*** (4.98)	4.2385*** (4.95)	-0.683 (2.12)	-2.051 (2.08)	0.747 (2.68)	0.442 (2.72)
Observations / Countries	1255 / 83	1282 / 85	1362 / 86	1429 / 90	1200 / 82	1232 / 84	409 / 82	454 / 83
R-squared	0.722	0.722	0.709	0.714	0.162	0.159	0.305	0.29
Mean Dep. var.	9.592	9.738	10.638	10.78	-0.028	-0.033	-0.065	-0.016
St Dev Dep. var.	11.17	11.327	13.61	13.851	4.118	4.163	2.775	3.057

Note: $y(t, t+s)$ corresponds to the average over the period t to $t+s$ of the variable y .

Except otherwise indicated, all controls are averages for the period over which the dependent variable is measured.

All regressions included country fixed effects and Time dummies

Robust standard errors in parentheses / * significant at 10%, ** significant at 5%, *** significant at 1%

Table 3

Sample of 1974-2004

Dependent Variable: Percentage of Change of the Real Gross Domestic Product

Variables	$\Delta\%GDP$					
	[1]	[2]	[3]	[4]	[5]	[6]
int1. Index (t)	1.269*** (0.270)	1.436*** (0.428)			1.352** (0.661)	
int1. Index_neg (t)		-0.37 (0.743)				
int2. Index (t)			1.790** (0.810)	2.862** (1.447)		3.292** (1.628)
int2. Index_neg (t)				-2.353 (2.312)		
<i>Control Variables</i>						
Lagged dep. var.	0.292*** (0.032)	0.292*** (0.032)	0.307*** (0.031)	0.307*** (0.031)	-0.035 (0.042)	-0.048 (0.033)
LGDP_HP_cycle (t)	-38.124*** (3.046)	-38.091*** (3.053)	-40.016*** (3.038)	-39.966*** (3.051)		
$\Delta\text{Log}(\text{ToT})$	0.038*** (0.006)	0.038*** (0.006)	0.038*** (0.006)	0.038*** (0.006)	0.071*** (0.017)	0.070*** (0.013)
Population growth	0.22 (0.147)	0.23 (0.147)	0.215 (0.152)	0.220 (0.152)	0.559*** (0.170)	0.573*** (0.196)
Financial account to GDP	0.039* (0.020)	0.040* (0.020)	0.062*** (0.021)	0.062*** (0.021)	0.059** (0.028)	0.087*** (0.025)
Trading partners growth	0.206** (0.083)	0.206** (0.083)	0.215*** (0.083)	0.214*** (0.083)	0.309* (0.175)	0.347** (0.147)
GDP (t)	-0.17 (0.674)	-0.19 (0.676)	0.103 (0.700)	0.076 (0.701)	-5.479*** (0.933)	-5.471*** (0.802)
Observations / Countries	1496 / 84	1496 / 84	1577 / 88	1577 / 88	510 / 84	577 / 88
R-squared	0.442	0.442	0.436	0.436	0.464	0.451
Mean Dep. var.	3.59	3.59	3.519	3.519	3.521	3.38
St Dev Dep. var.	4.099	4.099	4.165	4.165	3.094	3.135

Note: $y(t, t+s)$ corresponds to the average over the period t to $t+s$ of the variable y .

Except otherwise indicated, all controls are averages for the period over which the dependent variable is measured.

All regressions included country fixed effects and Time dummies / Robust standard errors in parentheses / * significant at 10%, ** significant at 5%, *** significant at 1%

Table 4

Sample of 1974-2004

Dependent Variable: Percentage of Change of the Gross Domestic Product Per Worker

Variables	$\Delta\%GDPpw$					
	[1]	[2]	[3]	[4]	[5]	[6]
	(t+1)					(t+1) (3-year average)
int1. Index (t)	0.683** (0.325)	1.207** (0.514)			0.852 (0.803)	
int1. Index_neg (t)		-1.1520 (0.897)				
int2. Index (t)			0.582 (1.141)	2.584 (1.696)		6.631*** (2.334)
int2. Index_neg (t)				-4.452 (3.271)		
<i>Control Variables</i>						
Lagged Dep. var.	0.156*** (0.028)	0.157*** (0.027)	0.159*** (0.027)	0.160*** (0.027)	0.016 (0.058)	-0.007 (0.051)
LGDP_HP_cycle (t)	-22.276*** (3.304)	-22.260*** (3.306)	-24.102*** (3.220)	-24.143*** (3.232)		
$\Delta\log(\text{ToT})$	0.038*** (0.008)	0.038*** (0.008)	0.034*** (0.008)	0.033*** (0.008)	0.063*** (0.018)	0.059*** (0.016)
Population growth	0.02 (0.177)	0.02 (0.178)	-0.003 (0.180)	0.010 (0.179)	0.273 (0.279)	0.290 (0.272)
Financial account to GDP	0.042* (0.024)	0.043* (0.024)	0.063*** (0.024)	0.064*** (0.024)	0.077* (0.041)	0.086** (0.036)
Trading partners growth	0.14 (0.103)	0.14 (0.103)	0.157 (0.102)	0.157 (0.102)	0.189 (0.205)	0.3 (0.201)
GDPpw (t)	-2.155*** (0.823)	-2.182*** (0.824)	-1.847** (0.818)	-1.863** (0.814)	-6.754*** (1.049)	-6.618*** (0.980)
Observations / Countries	1431 / 81	1431 / 81	1509 / 87	1509 / 87	513 / 83	578 / 87
R-squared	0.308	0.309	0.311	0.313	0.382	0.405
Mean Dep. var.	1.025	1.025	0.962	0.962	1.064	0.954
St Dev Dep. var.	4.498	4.498	4.542	4.542	3.455	3.494

Note: y(t, t-s) corresponds to the average over the period t to t-s of the variable y.

Except otherwise indicated, all controls are averages for the period over which the dependent variable is measured.

All regressions included country fixed effects and Time dummies / Robust standard errors in parentheses / * significant at 10%; ** significant at 5%; *** significant at 1%

Variables	trend (% change)				cycle (% change)				
	BK		HP		BK		HP		
	[1]	[2]	[3]	[4]	[5]	[6]	[7]	[8]	
int1. Index (t)	0.562*** (0.164)	0.270*** (0.104)	0.270*** (0.104)		0.599*** (0.222)		1.078*** (0.269)		
int1. Index (t-1)	0.598*** (0.165)	0.345*** (0.106)	0.345*** (0.106)						
int1. Index (t-2)	0.354** (0.169)	0.238** (0.104)	0.238** (0.104)						
int1. Index (t-3)	0.117 (0.168)	0.196* (0.105)	0.196* (0.105)						
int2. Index (t)		1.555*** (0.54)		0.969*** (0.33)		-0.451 (0.712)		0.814 (0.803)	
int2. Index (t-1)		1.810*** (0.52)		0.818*** (0.31)					
int2. Index (t-2)		1.892*** (0.504)		0.861*** (0.303)					
int2. Index (t-3)		1.177* (0.659)		0.788* (0.344)					
<i>Control Variables</i>									
LGDP_BK_trend (t)	-3.157*** (0.478)	-2.894*** (0.492)	-2.163*** (0.313)	-1.946*** (0.314)	-64.450*** (3.555)	-64.654*** (3.455)	-30.016*** (2.444)	-30.543*** (2.419)	
LGDP_HP_trend (t)									
LGDP_BK_cycle (t)									
LGDP_HP_cycle (t)									
ΔLog(ToT)	0.024*** (0.004)	0.024*** (0.004)	0.011*** (0.003)	0.011*** (0.003)	0.017*** (0.005)	0.016*** (0.005)	0.033*** (0.006)	0.031*** (0.006)	
Population growth	0.361*** (0.128)	0.368*** (0.130)	0.249*** (0.082)	0.262*** (0.083)	-0.124 (0.148)	-0.139 (0.144)	0.030 (0.132)	0.030 (0.135)	
Financial account to GDP	0.038*** (0.013)	0.048*** (0.013)	0.034*** (0.009)	0.039*** (0.008)	0.032** (0.015)	0.038** (0.015)	0.043** (0.019)	0.063*** (0.020)	
Trading partners growth	0.121** (0.052)	0.129** (0.054)	0.05 (0.032)	0.06 (0.034)	0.008 (0.059)	-0.015 (0.059)	0.150** (0.074)	0.141* (0.074)	
Observations / Countries	1298 / 82	1352 / 81	1477 / 82	1548 / 82	1327 / 82	1390 / 82	1498 / 82	1577 / 82	
R-squared	0.474	0.481	0.602	0.607	0.415	0.401	0.301	0.286	
Mean Dep. var.	3.329	3.28	3.298	3.246	0.149	0.175	0.323	0.316	
St.Dev Dep. var.	2.591	2.608	2.001	1.994	3.108	3.114	3.516	3.547	

Note: y(t, t+s) corresponds to the average over the period t to t+s of the variable y.

Except otherwise indicated, all controls are averages for the period over which the dependent variable is measured.

All regressions included country fixed effects and Time dummies / Robust standard errors in parentheses / * significant at 10%; ** significant at 5%; *** significant at 1%

Table 6

Sample of 1974-2004

Dependent Variable: Export and Import growth

Variables	$\Delta\%Import$														$\Delta\%Export$				$\Delta\%Export\ Herfindahl$			
	Volume														Volume				Index			
	(t+1)	[2]	[3]	[4]	[5]	[6]	[7]	[8]	[9]	[10]	[11]	[12]	[13]	[14]	(t+1)	(t)	(3-year average)	(3-year average)				
int1. Index (t)	5.092*** (1.394)		4.580* (2.417)		1.491 (2.777)		-0.7 (1.373)		-0.881 -2.62		-5.894** -2.488		0.032 (0.028)									
int2. Index (t)		9.186* (4.847)		6.729 (7.591)		-9.612 (7.152)		0.972 (4.558)		-12.539 (8.123)		-8.153 (7.348)						0.026 (0.074)				
<u>Control Variables</u>																						
Lagged dep. var.	-0.140*** (0.026)	-0.123*** (0.025)	-0.146*** (0.043)	-0.135*** (0.039)	-0.084* (0.043)	-0.138*** (0.039)	-0.117*** (0.038)	-0.129*** (0.037)	-0.107* (0.059)	-0.113* (0.059)	-0.167** (0.065)	-0.145** (0.060)	0.229** (0.089)	0.218*** (0.081)								
$\Delta\%GDP$	1.173*** (0.150)	1.298*** (0.151)	1.254*** (0.193)	1.420*** (0.184)	1.294*** (0.187)	1.393*** (0.170)	0.415*** (0.135)	0.439*** (0.126)	0.395** (0.195)	0.545*** (0.183)	0.380* (0.204)	0.422** (0.180)	0.004* (0.002)	0.003* (0.002)								
$\Delta\log(Tot)$	0.082** (0.037)	0.083** (0.034)	0.242*** (0.055)	0.168*** (0.057)	0.216*** (0.058)	0.220*** (0.051)	0.191*** (0.041)	0.176*** (0.038)	0.171** (0.071)	0.159** (0.067)	0.209*** (0.078)	0.186*** (0.069)	-0.001** (0.001)	-0.001** (0.001)								
Population growth	-0.488 (0.732)	-0.569 (0.746)	-1.722*** (0.512)	-1.889*** (0.494)	-2.111*** (0.439)	-2.222*** (0.454)	-0.071 (0.604)	-0.043 (0.599)	0.282 (0.851)	0.299 (0.839)	0.605 (0.913)	0.580 (0.767)	-0.008 (0.017)	0.008 (0.016)								
Financial account to GDP	0.035 (0.083)	0.068 (0.079)	-0.049 (0.094)	-0.04 (0.087)	0.072 (0.095)	0.01 (0.081)	0.112 (0.093)	0.108 (0.088)	0.077 (0.097)	0.07 (0.087)	0.057 (0.107)	0.04 (0.082)	-0.001 (0.001)	0.00 (0.001)								
Trading partners growth	1.358*** (0.337)	1.334*** (0.334)	0.109 (0.579)	0.65 (0.697)	0.166 (0.555)	0.37 (0.617)	0.420 (0.343)	0.376 (0.346)	0.116 (0.651)	-0.08 (0.606)	-0.150 (0.643)	0.03 (0.617)	-0.003 (0.005)	0.00 (0.005)								
Observations / Countries	966 / 62	1019 / 64	303 / 62	347 / 64	313 / 62	354 / 64	985 / 64	1044 / 66	312 / 63	351 / 66	320 / 64	359 / 66	270 / 71	309 / 77								
R-squared	0.291	0.277	0.517	0.477	0.505	0.521	0.19	0.19	0.343	0.338	0.345	0.355	0.882	0.861								
Mean Dep. var.	4.371	4.457	5.144	4.958	5.162	5.04	5.635	5.438	5.936	5.947	6.273	6.065	0.15	0.153								
St Dev Dep. var.	14.338	14.466	8.146	8.464	8.063	8.385	13.666	13.564	7.66	7.588	7.669	7.674	0.136	0.136								

Note: y(t, t+s) corresponds to the average over the period t to t+s of the variable y.

Except otherwise indicated, all controls are averages for the period over which the dependent variable is measured.

All regressions included country fixed effects and Time dummies / Robust standard errors in parentheses / * significant at 10%; ** significant at 5%; *** significant at 1%

Table 7

Sample of 1974-2004

Dependent Variable: Nominal Gross domestic savings, Real Gross capital formation as a share of GDP

Variables	Nominal Gross domestic savings as % GDP		Real Gross capital formation as % GDP			
	[1]	[2]	[3]	[4]	[5]	[6]
int1. Index (t)	1.058** (0.477)		1.968*** (0.264)		1.729*** (0.258)	
int2. Index (t)		5.027*** (1.340)		2.576*** (0.939)		1.566* (0.870)
<u>Control Variables</u>						
Lagged dep. var.			0.641*** (0.029)	0.641*** (0.029)	0.600*** (0.030)	0.597*** (0.030)
Δ %GDP (t)	0.158*** (0.039)	0.162*** (0.038)				
Savings/GDP					0.162*** (0.007)	0.168*** (0.007)
Δ Log(ToT)	0.059*** (0.011)	0.062*** (0.010)	0.00 (0.007)	0.00 (0.007)	-0.021 (0.007)	-0.021 (0.007)
Population growth	-0.02 (0.187)	0.03 (0.183)	0.01 (0.134)	0.05 (0.142)	0.01 (0.150)	0.04 (0.157)
Financial account to GDP	-0.171*** (0.036)	-0.142*** (0.033)	0.108*** (0.025)	0.138*** (0.025)	0.156*** (0.028)	0.181*** (0.028)
Trading partners growth	-0.10 (0.137)	-0.08 (0.132)	0.210** (0.085)	0.231*** (0.087)	0.246*** (0.084)	0.264*** (0.086)
Observations / Countries	1467 / 84	1544 / 88	1446 / 81	1525 / 85	1445 / 81	1524 / 85
R-squared	0.805	0.81	0.828	0.82	0.84	0.833
Mean	16.064	16.369	20.95	20.933	20.95	20.933
St Dev	10.805	10.877	5.988	6.156	5.988	6.156

Note: $y(t, t+s)$ corresponds to the average over the period t to $t+s$ of the variable y .

Except otherwise indicated, all controls are averages for the period over which the dependent variable is measured.

All regressions included country fixed effects and Time dummies

Robust standard errors in parentheses

* significant at 10%; ** significant at 5%; *** significant at 1%

Table 8

Sample of 1974-2004

Dependent Variable: Ratio of Retribution to Labor to Capital Compensation , (wL/rK)

Retribution to Labor as % Capital Compensation	
Variables	(t)
	[1] [2]
int1. Index (t)	-3.041* (1.787)
int1. Index (t-1, t-3)	-5.872** (2.885)
int2. Index (t)	-18.943*** (6.794)
int2. Index (t-1, t-3)	-34.842** (14.011)
<u>Control Variables</u>	
ΔLog(ToT)	-0.209*** (0.060)
Population growth	2.434 (1.749)
Financial account to GDP	-0.519** (0.251)
Trading partners growth	-0.181 (0.719)
Δ%GDPpw (t-1)	-0.467** (0.204)
Observations / Countries	595 / 51
R-squared	0.787
Mean Dep. var.	76.708
St Dev Dep. var.	35.825

Note: y(t, t+s) corresponds to the average over the period t to t+s of the variable y.

Except otherwise indicated, all controls are averages for the period over which the dependent variable is measured.

All regressions included country fixed effects and Time dummies

Robust standard errors in parentheses

* significant at 10%; ** significant at 5%; *** significant at 1%

Table 9

Sample of 1974-2004

Dependent Variable: Unemployment Rate

Variables	Unemployment Rate (in %)			
	[1]	[2]	[3]	[4]
			(t+1)	
int1. Index (t)	-0.414*	-0.439**		
	(0.221)	(0.203)		
int1. Index (t-1)	0.067	0.244		
	(0.211)	(0.191)		
int2. Index (t)			-2.912***	-1.830**
			(0.771)	(0.741)
int2. Index (t-1)			-1.946***	-0.935
			(0.749)	(0.661)
<u>Control Variables</u>				
Lagged dep. var.	0.760***	0.745***	0.738***	0.722***
	(0.037)	(0.034)	(0.035)	(0.031)
$\Delta\text{Log}(\text{ToT})$	-0.009		-0.013	
	(0.008)		(0.008)	
Population growth	0.009		-0.1	
	(0.194)		(0.194)	
Financial account to GDP	0.009		-0.021	
	(0.022)		(0.021)	
Trading partners growth	-0.112		-0.079	
	(0.070)		(0.064)	
$\Delta\%$ GDP (t)		-0.036*		-0.050***
		(0.019)		(0.017)
Observations / Countries	491 / 44	591 / 56	523 / 46	632 / 58
R-squared	0.915	0.925	0.922	0.927
Mean Dep. var.	7.734	8.398	8.284	8.852
St Dev Dep. var.	3.985	4.312	4.129	4.345

Note: y (t, t+s) corresponds to the average over the period t to t+s of the variable y.

Except otherwise indicated, all controls are averages for the period over which the dependent variable is measured.

All regressions included country fixed effects and Time dummies

Robust standard errors in parentheses

* significant at 10%, ** significant at 5%; *** significant at 1%

Definitions and Sources of Variables Used in Regression Analysis

Variable	Definitions and Sources
$\Delta\%$ Deflator	Percentual Change of GDP deflator
$\Delta\%$ Deflator - $\Delta\%$ CPI	Percentual Change of GDP deflator - Percentual Change of CPI
$\Delta\%$ Export (volume)	Percentual Change of the volume of the Export of goods and services as a share of GDP; Source: World Development Indicators [WDI]
$\Delta\%$ GDP	Percentual Change of the Real Gross Domestic Product
$\Delta\%$ GDPpw	Percentual Change of the Real Gross Domestic Product Per Worker
$\Delta\%$ Import (volume)	Percentual Change of the volume of the Import of goods and services as a share of GDP,Source: WDI
$\Delta\%$ CPI	Percentual Change of CPI
$\Delta\%$ M2	Percentual Change of M2
int2. Index	Change in the ratio of foreign assets by the Central Bank and M2
$\Delta\text{Log}(T\&O;T)$	Terms of trade logarithm change
BK cycle (% change)	Percentual Change of the Baxter-King band pass cycle of Real Gross Domestic Product
BK trend (% change)	Percentual Change of the Baxter-King band pass trend of Real Gross Domestic Product
Lagged dep. var.	Lag of the dependent variable
Financial account to GDP	Average Financial account to GDP; Source: IMF's International Financial Statistics [IFS]
Foreign_assets/M2	Central Bank foreign assets as percentage of M2 (money+quasi_money) ; Source: IFS
GDP	Real Gross Domestic Product; Source: WDI
GDP Deflator	GDP Current (LCU) / GDP constant (LCU), Source:WDI
GDP per worker	Log Real Gross Domestic Product Per Worker; Source: Penn World Table [PWT]
Nominal Gross domestic savings as % GDP	Nominal gross domestic savings as a share of GDP; Source: WDI
Real Gross capital formation as % GDP	Real Gross capital formation as a share of GDP; Source: WDI
HP cycle (% change)	Percentual Change of the Hodrick-Prescott cycle of Real Gross Domestic Product
HP trend (% change)	Percentual Change of the Hodrick-Prescott trend of Real Gross Domestic Product
CPI	Consumer Price Index, Source:WDI
Population	Total population; Source:WDI
Population growth	Population Growth
tcr	Annual average real exchange rate, calculate from montly data; Source: IFS
TCR	Logarithm of tcr
Retribution to Labor as % Capital Compensation	Compensation of employees / Operating surplus, gross; Source: United Nations
ToT	Terms of trade, Exports as a capacity to import (constant Local Currency units). Source: WDI

Variable	Definitions and Sources
Trading Partners Growth	External Demand Growth ; Source: IFS & Balance of Payments Statistics, IMF
Unemployment Rate (in %)	Share of labor force including people available for and seeking employment.Source: International Labour Organization [ILO]
int1. Index	Index int1
$\Delta\%M2$	Percentual Change of M2
M2	Money + quasi_money; Source: IFS
LGDP_HP_cycle	Hodrick Prescott cycle of natural logarithm of GDP
LGDP_BK_trend	Baxter-King trend of natural logarithm of GDP
LGDP_HP_trend	Hodrick Prescott trend of natural logarithm of GDP
LGDP_BK_cycle	Baxter-King cycle of natural logarithm of GDP
int1. Index negative	Index of negative int1 values
int2. Index negative	Negative change in the ratio of foreign assets by the Central Bank and M2
$\Delta\%ExportHerfin$	Percentual Change of the Herfindal index of export value; Source: Lederman & Maloney (200X)
Saving nominal/GDP	Nominal gross domestic savings as a share of GDP; Source: WDI
Interest Rate	Nominal interest rate; Source: IFS

Eference

Aghion, P., Comin D. and Howitt, P. (2006), “When Does Domestic Saving Matter for Economic Growth?”, *NBER Working Paper* No. 1227, June.

Aizenman, J. and Lee, J. (2007), “International Reserves: Precautionary Versus Mercantilist Views, Theory and Evidence”, *Open Economies Review*, Vol. 18, issue 2, pp. 191-214.

Caballero, R.J. and Lorenzoni,G. (2006), “Persistent Appreciations, Overshooting and Optimal Exchange Rate Intervention,” *MIT*, Mimeo

Calvo, G. and Reinhart, C. (2002), “Fear Of Floating”, *The Quarterly Journal of Economics*, *MIT Press*, Vol. 117, Vol. 2 (May), pp. 379-408.

Calvo, G. A. (2000), “The Case for Hard Pegs in the Brave New World of Global Finance”, *Mimeo*, *University of Maryland*.

Calvo G., A. Izquierdo and R. Loo-Kung (2005), “Relative Price Volatility under Sudden Stops: The Relevance of Balance-Sheet Effects”, *Journal of international Economics*, June 2006, also NBER Working Paper No.11492

Calvo G. and E. Talvi, (2006) “Phoenix Recoveries” Mimeo IADB.

Chang, R. and Velasco, A. (2001), “A Model of Financial Crises in Emerging Markets”, *Quarterly Journal of Economics*, Vol.116, pp. 489-517.

De la Torre, A., Levy Yeyati, E. and Schmukler, S. (2003), “Living and Dying with Hard Pegs: The Rise and Fall of Argentina’s Currency Board”, *Economía*, Vol. 5 (2), pp. 43-99.

Diaz Alejandro, C. (1965), “Exchange Rate Devaluation in a Semi-Industrialized Country”, Cambridge, United States: MIT Press.

Dooley, M., Folkerts-Landau, D. and Garber P. (2004), “The Revised Bretton Woods System”, *International Journal of Finance and Economics*, No. 9(October), pp. 307-313.

Edwards, S. (1989), “Real Exchange Rates, Devaluation, and Adjustment”, Cambridge, MA: The MIT Press.

Eichengreen, B. (1994), “International Monetary Arrangements for the 21st Century” Washington, DC. *The Brookings Institution*.

Fisher, S. (2001), "Exchange Rate Regimes: Is The Bipolar View Correct?", *Journal of Economic Perspectives*, Vol. 15(2)(Spring), pp. 3-24.

Frankel J. (2005),“Contractionary Currency Crises in Developing Countries”, *IMF Staff Papers*, Vol. 52, No.2.

Hausman, R., L. Pritchett, and D. Rodrik (2005), "Growth Accelerations," *Kennedy School of Government*, Mimeo.

Hausmann, R. and Rodrik, D. (2005), "It is not how much you export but what you export". John F. Kennedy School of Government, Universidad de Harvard, august, Cambridge, MA

Hausmann, R., Hwang, J. and Rodrik, D. (2006). "What You Export Matters," *CEPR Discussion Papers* No.5444

Johnson, Simon, Jonathan Ostry and Arvind Subramanian (2006), "Leves for Growth, Finance and Development", March Vol. 43, No. 1.

Krugman, P.R., (1987), "The Narrow Moving Band, the Dutch Disease, and the Economic Consequences of Mrs. Thatcher," *The Journal of Development Economics*, Vol. 27, pp. 41-55.

Krugman, P. (1999), "Balance Sheets, the Transfer Problem, and Financial Crises." *International Tax and Public Finance*, Vol.6(4)(November), pp. 459-72.

Levy-Yeyati, E. and Sturzenegger, F. (2005), "Classifying Exchange Rate Regimes: Deeds vs. Words.", *European Economic Review*, Vol. 49 (August), pp. 1603-1635.

Levy Yeyati, E. and F. Sturzenegger (2001), "Exchange Rate Regimes and Economic Performance", *IMF Staff Papers*, Vol. 47, pp. 62-98.

Levy Yeyati, E. and F. Sturzenegger (2003a), "To Float or to Trail: Evidence on the Impact of Exchange Rate Regimes", *American Economic Review*, Vol. 93, No. 4, September 2003.

Levy Yeyati, E. and F. Sturzenegger (2003b), "A de facto Classification of Exchange Rate Regimes: A Methodological Note", posted at <http://www.aeaweb.org/aer/contents/> of *American Economic Review*, Vol. 93, No. 4, September.

Levy-Yeyati, E. (2005), "Exchange Rate Regimes in the 2000s: A Latin American Perspective", prepared for the *Conference on A New Economic Development Agenda for Latin America, Salamanca*, October 8-9.

Levy-Yeyati, E. (2006), "Financial Dollarization: Evaluating its Consequences", *Economic Policy*, Vol. 21, No. 45, pp. 61-118, January.

Lewis, WA (1958) "Unlimited Supplies of Labour: Further Notes", *The Manchester School*, Vol. 26, 1:1-32.

Prasad, Eswar, Raghuram Rajan, and Arvind Subramanian (2006) Foreign Capital and Economic Growth, Research Department IMF, August 30.

Rajan, Raghuram and Arvind Subramanian (2005) What Undermines Aid's Impact on Growth?, IMF Working Paper, June.

Rajan, Raghuram and Arvind Subramanian (2006) Aid, Dutch Disease, and Manufacturing Growth, June 2006

Reinhart, C. and Rogoff, K. (2003), "The Modern History of Exchange Rate Arrangements: A Reinterpretation" (May 2002). *NBER Working Paper* No. W8963. Revised version March 2003, *Quarterly Journal of Economics*, Vol. CXIX No. 1, February 2004, 1-48.

Rodrik, Dani (2006) Industrial Development: Stylized Facts and Policies, Mimeo Kennedy School of Government.

Rodrik, Dani (2005), "Why we learn nothing from regressing economic growth on policies," Manuscript, Harvard

Rodrik, Dani (2007) "The Real Exchange Rate and Economic Growth: Theory and Evidence", Mimeo Kennedy School of Government, Harvard University.

Rose, Andrew K. (2006), "A Stable International Monetary System Emerges: Inflation Targeting Is Bretton Woods, Reversed", *NBER Working Paper* No. 12711

Shambaugh J. (2004), "The Effect of Fixed Exchange Rates on Monetary Policy", *The Quarterly Journal of Economics*, Vol. 119, pp. 300-351.